



JOHN DEERE

4000

SERIES

COMPACT UTILITY TRACTORS

4005 | 4105 | 4120 | 4320 | 4520 | 4720



4000 TWENTY SERIES

4120 | 4320 | 4520 | 4720

Settle in for the long haul.

When it comes to comfort and performance, John Deere 4000 TWENTY Series Tractors stay ahead of the game with premium features and an efficient design. Take the adjustable, ergonomic driver's seat, for instance. Or pedals that reduce stress on your legs and ankles. When you add features like the Economy PTO for extra fuel savings and the exclusive Performance Tracking System for at-a-glance system monitoring, you've got a tractor that combines advanced technology with superior comfort.

- 1 **LoadMatch™ electronic power management system** maximizes torque and virtually eliminates the possibility of stalling.
- 2 **Quik-Park™ loaders** can be attached and detached in minutes—without tools.
- 3 **Standard 4WD** digs in when doing loader work or rotary cutting over challenging ground.
- 4 Available **eHydro™ hydrostatic transmission** makes it easy to switch from forward to reverse, plus lets you rest your heel on the platform.
- 5 An exclusive digital **Performance Tracking System** instantly tells you the status of the vital systems on your tractor.
- 6 **Economy PTO** runs at a lower rpm, providing fuel efficiency without compromising power or capacity.





Standard Features and Options

Dimensions



Transmission

eHydro™
Effortless two-pedal automatic transmission. With easy shifting from forward to reverse at the touch of a pedal, it's ideal for everything from loading to mowing. And with eThrottle™ on 4520 and 4720, a turn of a switch allows the tractor to operate like a car, by linking engine and transmission together.

PowerReverser™
Convenient dash-mounted lever makes this manual transmission easy to shift from forward to reverse without clutching—a noticeable benefit when loading.

Tire options

Bar Tread/R1
Provides the best traction, not as gentle on turf.

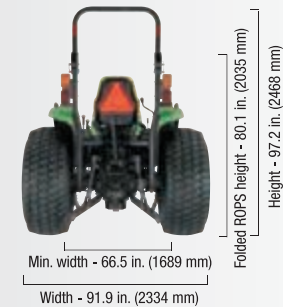
Turf Tires/R3
Less aggressive tread is perfect for mowing and landscape work.

Turf Special/R3
Specialty high-flotation tires typically used on fine turf like golf courses.

Industrial/R4
Excellent traction and is softer on the grass than R1s. Often the preferred choice.

Other options

- 3rd SCV
- Air ride seat
- Automotive-style cruise control (eHydro only)
- Canopy
- Electric diverter/2 add'l rear hydraulic couplers
- Mid PTO
- Power beyond hydraulics
- Sunshade umbrella
- Seat armrests
- Top-and-tilt kit
- Vertical exhaust
- Economy PTO (optional on 4520 and 4720)



1

Visibility:

Unique raised header bar and high seat placement enable 360-degree views for safer maneuvering.

2

Climate control:

Roof-mounted system offers 15,000 BTUs of cooling and 30,000 BTUs of heating for year-round comfort.

3

Allergen protection:

ComfortGard™ cab keeps out dust and clippings—as well as microscopic allergens.

4

Right-hand control center:

Lever and controls are within easy reach for more efficient operating.

5

Automotive features:

Just like a car, the John Deere 4000 TWENTY Series Tractors provide extra features to keep you comfortable.

- Cup holder
- Arm rest
- Windshield wiper
- Sun visor
- Stereo
- Automotive cruise control (set, resume, accelerate, decelerate)

1

3

5

2

4000 TWENTY SERIES CAB

All-around comfort.

Don't mind the weather. Despite rain, snow or sweltering sun, you'll be comfortable in a John Deere 4000 TWENTY Series cab. Tightly sealed to practically eliminate dust and allergens, designed to maximize visibility, and pressurized to boost air quality, the 4000 TWENTY Series cabs keep you focused on the task at hand—not Mother Nature. Plus, safety features like the Rollover Protection Structure ensure these tractors are as safe as they are comfortable.

A High-performance heating

With a 15,000 BTU heater, you can stay comfortable even in the worst winter conditions while removing snow and ice from roads, driveways, paths and more.

B High-performance cooling

Extra large condensers and blowers mean fast, efficient cooling in the summer heat when mowing roadsides, cutting hay or doing loader work.

C Completely pressurized

Unlike competitors, John Deere ComfortGard Cabs are sealed and pressurized to keep cool air inside and dust and allergens where they belong: Outside.

D True commercial-grade backhoes mount and dismount easily. Bucket rotation of 180 degrees is perfect for trenching without leaving behind spillage. Now available on cab and open station models.



Standard Features and Options

Standard cab features

- Air conditioning and heat
- Forward work lights
- Front windshield wiper
- Deluxe cloth seat
- Integrated radio antenna
- Sun visor
- Right-hand control center
- Exclusive raised header bar
- Available R1, R3, R3 fine turf, R4 tires

Other options

- Deluxe air ride seat
- Dual external rearview mirrors
- AM/FM radio w/CD
- Cab speaker kit
- Beacon light
- Back up alarm
- Front fender kit
- Rear fender extension kit
- Rear work light kit

4



AM/FM radio w/CD



Rear work lights



Deluxe air ride seat



Right-hand control center

4005 & 4105

Quality and power come standard.

They're quick, compact—and anything but basic. The John Deere 4005 and 4105 Compact Utility Tractors are built for hard work without the hassle, especially when it comes to loading, mowing and backhoe work. You'll experience reliable gear transmission and easy shifting from forward to reverse with the 4005, or standard hydrostatic transmission with no clutching or shifting with the 4105. Plus, the 4105 gives you Twin Touch™ pedals, 4WD and power steering.



- 1 **40.5 and 41.5 HP—Yanmar Liquid-Cooled Diesel Engine.** Efficient diesel engines that offer deep reserves of torque for handling tough loads.
- 2 **Fixed Roll Over Protective Structure—**certified to ASAE standards.
- 3 Optional **iMatch™ Quick Hitch** makes lining up and attaching rear implements a snap.
- 4 **Quik-Park™ 300 CX Loader** can be attached and detached in less than three minutes with no tools and never leaving the seat.
- 5 **Effortless power steering** even during loader operation.
- 6 **4WD and differential lock** dig in during loader work or traveling over challenging ground (optional on 4005 model).



4005

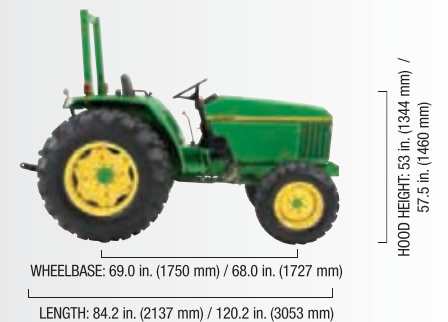
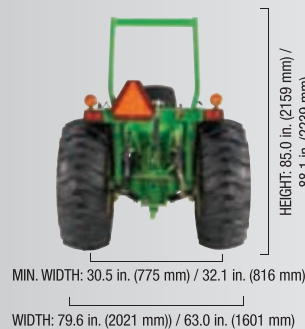


4105

4005 Compact Utility Tractors Reliable gear transmission with 9 forward and 3 reverse speeds, plus straight line shuttles for quickly shifting from forward to reverse.

4105 Compact Utility Tractors Standard with hydrostatic transmission, no clutching or shifting, changes direction on a dime, perfect for loader, mowing and backhoe work.

4005/4105 Dimensions



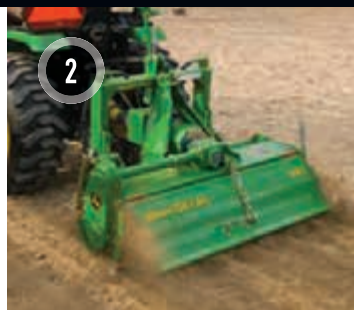
OVER 200 ATTACHMENTS



iMatch™ AutoHitch™

Stay in your seat. This exclusive, patent-pending coupling system allows you to effortlessly attach rear-mounted, PTO-driven implements without getting out of the seat. Use your imagination. Mowing, rotary cutting, blading and grading, tilling or aerating—you won't find a simpler way to get more done.

- 1 To quickly change implements with the iMatch Quik-Hitch, you simply back in, hydraulically lift the unit and secure the latches.
- 2 Once you're connected and the unit is in place, there's an even easier way to automatically hook up PTO-driven attachments. The iMatch AutoHitch is the answer. To hook up the drive shaft to the secure unit, just rotate the handle, turn and pull AutoHitch lever.
- 3 Drive off.



1 Quik-Park™ Loaders—Fast cycle times, self leveling, and impressive lift capacity for superior loading performance. Save time loading and save time putting them on and taking them off—a mere three minutes or less.

2 Tiller—Commercial-duty with heavy-duty tubular tine shafts for excellent performance and durability even in packed down soil conditions.

3 Rotary Cutters—Designed to cut wide areas fast and those hard-to-reach areas easier.

4 Box Blades—Take down mountains of work or just smooth out those molehills. Precision grading options available for standard duty, mid duty or construction grade.

5 Overseeder—These 3-pt. hitch-compatible units quickly lay down new lawns with aggressive aerating action, precision-metered seed cups and large hopper capacities.

6 Food Plot Seeder—Save time and fuel with single piece of equipment that can disc, plow, furrow, deposit seed, pack soil, cover seed and smooth soil in one pass. Custom-designed electronic drop seeder plants virtually any seed.

7 Backhoes—Powerful digging and backfilling action along with excellent visibility to the trench. Available for cab and open station models.



Attachments

	4005	4105	4120	4320	4520	4720
BACKHOES	●	●	●	●	●	●
BOX BLADES	●	●	●	●	●	●
CORE AERATOR	●	●	●	●	●	●
DISK HARROW	●	●	●	●	●	●
FLAIL MOWERS	●	●	●	●	●	●
FOOD PLOT SEEDER	●	●	●	●	●	●
GROOMING MOWERS	●	●	●	●	●	●
GROOMING MOWERS, REAR DISCHARGE	●	●	●	●	●	●
iMATCH AUTOHITCH	●	●	●	●	●	●
LANDSCAPE RAKES	●	●	●	●	●	●
LOADERS	●	●	●	●	●	●
MANURE SPREADERS	●	●	●	●	●	●
MID-MOUNT MOWERS	●	●	●	●	●	●
OVERSEEDERS	●	●	●	●	●	●
PENDULAR SPREADERS	●	●	●	●	●	●
POSTHOLE DIGGERS BY ROTOMEC	●	●	●	●	●	●
PULVERIZERS	●	●	●	●	●	●
REAR BLADES	●	●	●	●	●	●
ROTARY CUTTERS	●	●	●	●	●	●
ROTARY TILLERS	●	●	●	●	●	●
SICKLEBAR MOWERS	●	●	●	●	●	●
WHEEL RAKES	●	●	●	●	●	●

7

Pick up and go.

More than 200 attachments are ready and waiting for you to give them a spin. From backhoes to wheel rakes and every task in between, John Deere commercial-grade attachments not only do it all, they do it better and sooner. The time between starting up your tractor and getting work done is considerably shorter, thanks to John Deere iMatch™ AutoHitch™, Quik-Park™ loaders.

SPECS

ENGINE

Type
HP*
PTO HP
Engine Displacement

4005

Yanmar 4-cylinder diesel
41.5 (30.5 kW)
35 (26.1 kW)
121.7 cu. in. (2.0 L)

4105

Yanmar 3-cylinder diesel
40.5 (29.8 kW)
32.5 (24.2 kW)
91.5 cu. in. (1.5 L)

ELECTRICAL

Battery Capacity
Alternator

650 CCA
20 amps

500 CCA
40 amps

HYDRAULICS

Steering
Implement
Total Capacity
Lift Capacity (24 in. Behind Link Arms)

4.5 gpm (17.0 L/min.)
8.5 gpm (32.2 L/min.)
13 gpm (49.2 L/min.)
2,020 lb. (916.3 kg)

5.7 gpm (21.6 L/min.)
9.2 gpm (34.7 L/min.)
14.8 gpm (56.2 L/min.)
2,200 lb. (999 kg)

TRANSMISSION

Standard Transmission
Final Drive
Brakes
Steering
Clutch
4WD

Collar shift 9F/3R
Planetary
Wet disk
Power
2-stage dry
Optional

Hydrostatic
Spur gear
Wet disk
Power
Wet disk
Standard

PTO

PTO Type
PTO Location

Continuous live
Rear standard

Independent
Rear standard

REAR HITCH

Type
Control Type

Category 1
Position

Category 1
Position

WEIGHT

With All Fluids

2WD 2,954 lb. (1340 kg)
4WD 3,175 lb. (1440 kg)

N/A
4WD 2,987 lb. (1355 kg)

TIRE OPTIONS

Bar Tread/R1, Turf Tire/R3

Bar Tread/R1, Industrial/R4

ROLL OVER PROTECTIVE STRUCTURE

Fixed

Fixed

300 CX LOADER

Lift Capacity at full height,
Measured at pivot

1256 lb. (571 kg)

1393 lb. (633 kg)



No one builds or backs tractors better than John Deere.

It's the fine print, but a big story:
Every John Deere Compact Tractor comes
with a 3-year/2000-hour limited warranty.
See your dealer for details.

3 YEARS 2000 HOURS
LIMITED WARRANTY

*Manufacturer's estimate of power (ISO) per 97/68/EC. ** eHydro

SPECS

Engine
Type
HP*
PTO HP
Engine Displacement

4120

John Deere PowerTech™
4-cylinder turbocharged diesel
43 (31.6 kW)
35/37 (26.1/27.6 kW)
148.9 cu. in. (2.44 L)

4320

John Deere PowerTech™
4-cylinder turbocharged diesel
48 (35.3 kW)
39.9 (29.8 kW)
148.9 cu. in. (2.44 L)

4520

John Deere PowerTech™
4-cylinder turbocharged diesel
60 (44.1 kW)
50/52 (37.3/38.8 kW)
148.9 cu. in. (2.44 L)

4720

John Deere PowerTech™
4-cylinder turbocharged diesel
66 (48.5 kW)
56 (41.8 kW)
148.9 cu. in. (2.44 L)

ELECTRICAL

Battery Power
Alternator

770 CCA
70 A

770 CCA
70 A

770 CCA
70 A

770 CCA
70 A

HYDRAULICS

Steering
Implement
Total Capacity
Lift Capacity (24 in. Behind Link Arms)

5.1 gpm (19.3 L/min)
12 gpm (45.3 L/min)
17.1 gpm (64.6 L/min)
2,500 lb. (1134 kg)

5.1 gpm (19.3 L/min)
12 gpm (45.3 L/min)
17.1 gpm (64.6 L/min)
2,500 lb. (1134 kg)

5.1 gpm (19.3 L/min)
12 gpm (45.3 L/min)
17.1 gpm (64.6 L/min)
2,500 lb. (1134 kg)

5.1 gpm (19.3 L/min)
12 gpm (45.3 L/min)
17.1 gpm (64.6 L/min)
2,500 lb. (1134 kg)

TRANSMISSION

Standard Transmission

PowrReverser™
(12 Forward/12 Reverse gears)
eHydro™
Planetary
Wet disk
Power
Wet disk, PowrReverser™
Standard

PowrReverser™
(12 Forward/12 Reverse gears)
eHydro™
Planetary
Wet disk
Power
Wet disk, PowrReverser™
Standard

PowrReverser™
(12 Forward/12 Reverse gears)
eHydro™
Planetary
Wet disk
Power
Wet disk, PowrReverser™
Standard

eHydro™
N/A
Planetary
Wet disk
Power
N/A
Standard

Optional Transmission

Final Drive

Brakes

Steering

Clutch

4WD

PTO

PTO Type
PTO Locations
Economy PTO

Independent
Rear standard, mid optional
N/A

Independent
Rear standard, mid optional
N/A

Independent
Rear standard, mid optional
Optional

Independent
Rear standard, mid optional
Optional

REAR HITCH

Type
Control Type

Category 1
Position

Category 1
Position

Category 1
Position

Category 1
Position

WEIGHT (OPEN STATION)

With All Fluids

3,700 lb. (1679 kg)

3,700 lb. (1679 kg)

3,700 lb. (1679 kg)

3,700 lb. (1679 kg)

TIRE OPTIONS

Bar Tread/R1, Turf Tire/R3,
Turf Special/R3, Industrial/R4

Bar Tread/R1, Turf Tire/R3,
Turf Special/R3, Industrial/R4

Bar Tread/R1, Turf Tire/R3,
Turf Special/R3, Industrial/R4

Bar Tread/R1, Turf Tire/R3,
Turf Special/R3, Industrial/R4

ROLL OVER PROTECTIVE STRUCTURE

Folding

Folding

Folding

Folding

COMFORTGARD™ CAB

N/A

Optional

Optional

Optional

AIR RIDE SEAT

Optional

Optional

Optional

Optional

CRUISE CONTROL

Standard

Standard

Standard

Standard

LOADMATCH™

Standard

Standard

Standard

Standard

AUTO CRUISE / MOTIONMATCH™

Optional

Optional

Optional

Optional

400 CX LOADER

Lift capacity at full height,
Measured at pivot

2194 lb. (977 kg)

2194 lb. (977 kg)

2194 lb. (977 kg)

2194 lb. (977 kg)

Total support is standard equipment.



No one can duplicate the support and knowledge of your local John Deere dealer. From the moment you enter a John Deere dealership, you can be sure you're getting the very best in customer assistance. Plus, John Deere dealers are in touch with your local community and understand what it takes to maintain your land. Factory-trained service and parts professionals keep your equipment working as hard as you do. Whether in the John Deere dealership or in the field, you can get your equipment serviced and move on to the next task.

Exceptional Parts Support

Behind every John Deere is a parts support network to get you the high-quality part you need fast. If your dealer does not have

a part in stock, in most cases you can order it by 5 p.m., and have it the next day. Or, order parts online at www.JDParts.com.

Flexible Available Financing

John Deere Credit has convenient and flexible financing options designed for you. See your dealer for details.



Altech FEI
World Equestrian Games™
Kentucky 2010

Official Equipment Supplier

This literature has been compiled for worldwide circulation. While general information, pictures and descriptions are provided, some illustrations and text may include finance, credit, insurance, product options and accessories NOT AVAILABLE in all regions. PLEASE CONTACT YOUR LOCAL DEALER FOR DETAILS. John Deere reserves the right to change specification, design and price of the products described in this literature without notice. John Deere's green and yellow color scheme, the leaping deer symbol, and JOHN DEERE are trademarks of Deere & Company.

